

FLUGLÄRM-MESSSTATION VERKEHRSFLUGHAFEN SYLT

Messergebnisse für die Standorte
Wenningstedt, Dünenstraße 17 und
Keitum/Sylt-Ost, Park & Ride Parkplatz

Januar 2025

IMPRESSUM

Herausgeber: Flughafen Sylt GmbH
Flughafenstraße 1
25980 Sylt/OT Tinnum

Bearbeitung: ACCON GmbH
Gewerbering 5
86926 Greifenberg
www.accon.de



© 2025

Nachdruck und Wiedergabe nur mit Genehmigung des Herausgebers

INHALT

| | | |
|-----------|---|-----------|
| 1 | Begriffe (gemäß DIN 45643, 2011-02)..... | 4 |
| 2 | Lageplan mit stationären Fluglärm-Messstationen | 5 |
| 3 | Messstellenstatistik | 7 |
| 3.1 | Statistik Standort 1 - Wenningstedt, Dünenstraße 17 | 7 |
| 3.2 | Statistik Standort 2 - Keitum/Sylt-Ost, Park & Ride Parkplatz..... | 9 |
| 4 | Äquivalenter Dauerschallpegel $L_{p,A,eq,FI,Tag}$ jedes Tages (Fluggeräusch)..... | 11 |
| 4.1 | $L_{p,A,eq,FI,Tag}$ Standort 1 - Wenningstedt, Dünenstraße 17..... | 11 |
| 4.2 | $L_{p,A,eq,FI,Tag}$ Standort 2 - Keitum/Sylt-Ost, Park & Ride Parkplatz | 12 |
| 5 | Äquivalenter Dauerschallpegel $L_{p,A,eq,FI,Nacht}$ jeder Nacht (Fluggeräusch) | 13 |
| 5.1 | $L_{p,A,eq,FI,Nacht}$ Standort 1 - Wenningstedt, Dünenstraße 17 | 13 |
| 5.2 | $L_{p,A,eq,FI,Nacht}$ Standort 2 - Keitum/Sylt-Ost, Park & Ride Parkplatz..... | 13 |
| 6 | Stundenbezogene äquivalente Dauerschallpegel $L_{p,A,eq,1h}$ (Gesamtgeräusch) | 14 |
| 6.1 | $L_{p,A,eq,1h}$ Standort 1 - Wenningstedt, Dünenstraße 17..... | 14 |
| 6.2 | $L_{p,A,eq,1h}$ Standort 2 - Keitum/Sylt-Ost, Park & Ride Parkplatz | 15 |
| 7 | Stundenbezogene äquivalente Dauerschallpegel $L_{p,A,eq,FI,1h}$ (Fluggeräusch)..... | 16 |
| 7.1 | $L_{p,A,eq,FI,1h}$ Standort 1 - Wenningstedt, Dünenstraße 17 | 16 |
| 7.2 | $L_{p,A,eq,FI,1h}$ Standort 2 - Keitum/Sylt-Ost, Park & Ride Parkplatz..... | 17 |
| 8 | Anzahl der Fluggeräuschereignisse im Monat Januar pro Tagesstunde | 18 |
| 8.1 | Anzahl der Fluggeräuschereignisse Standort 1 - Wenningstedt, Dünenstraße 17..... | 18 |
| 8.2 | Anzahl der Fluggeräuschereignisse Standort 2 - Keitum/Sylt-Ost, Park & Ride Parkplatz..... | 19 |
| 9 | Meteorologische Angaben am Standort 1 – Wenningstedt, Dünenstraße 17..... | 20 |
| 10 | Äquivalente Dauerschallpegel im Vergleich zu Vormonaten | 21 |
| 10.1 | $L_{p,A,eq,T}$ und $L_{p,A,eq,FI,T}$ im Monatsvergleich Standort 1 - Wenningstedt, Dünenstraße 17..... | 21 |
| 10.2 | $L_{p,A,eq,T}$ und $L_{p,A,eq,FI,T}$ im Monatsvergleich Standort 2 - Keitum/Sylt-Ost, Park & Ride Parkplatz..... | 22 |

1 Begriffe (gemäß DIN 45643, 2011-02)

A-bewerteter äquivalenter Dauerschalldruckpegel des Gesamtgeräusches $L_{p,A,eq,T}$

10-facher dekadischer Logarithmus des über ein Zeitintervall T gemittelten Quadrates des Verhältnisses des A-bewerteten Schalldrucks zum Bezugsschalldruck von 20 μ Pa in Dezibel,

A-bewerteter äquivalenter Dauerschalldruckpegel des Fluggeräusches $L_{p,A,eq,FI,T}$

Mittelungspegel, gebildet aus den A-bewerteten Einzelereignis-Schalldruckpegeln der in einem anzugebenden Zeitintervall T auftretenden Fluggeräusches,

AS-bewerteter Maximalschalldruckpegel $L_{p,AS,max,i}$

Maximalwert des AS-bewerteten Schalldruckpegels des i-ten Einzelgeräuschereignisses,

Gesamtgeräusch

Summe aller akustischen Immissionen in einer gegebenen Situation zu einer gegebenen Zeit, die sich in der Regel aus Geräuschen von mehreren Quellen zusammensetzt,

Fluggeräusch

Von einem Luftfahrzeug während seines Betriebs vom Beginn des Startrollvorgangs bis zum Verlassen der Landebahn nach der Landung erzeugtes Geräusch,

Fluggeräusch-Ereignisse N1

Anzahl der durch Klassifizierung oder Identifizierung ermittelten Einzelschallereignisse am Messort, die von Luftfahrzeugbewegungen erzeugt wurden, die dem Flugplatz zuzuordnen sind,

mittlerer AS-bewerteter Maximalschalldruckpegel $L_{max,AS,T}$

Energetisch gemittelter AS-bewerteter Maximalschalldruckpegel, gemittelt über die Maximalschalldruckpegel, die in einem betrachteten Zeitintervall T anfallen.

2 Lageplan mit stationären Fluglärm-Messstationen





Messtation 1: Wenningstedt, Dünenstraße 17



Messtation 2: Keitum/Sylt-Ost, Park & Ride Parkplatz

3 Messstellenstatistik

3.1 Statistik Standort 1 - Wenningstedt, Dünenstraße 17

| Datum | Ereignisse | | | | Verfügbarkeit | | | Gesamtgeräusch (Äquivalenter Dauerschalldruckpegel) | | | Fluggeräusch (Äquivalenter Dauerschalldruckpegel) | | | |
|------------|--------------------------|-------|---------------------------------------|-------|---------------|-------|--|--|--|--|---|---|---|------|
| | Anzahl Flugbewegungen | | Anzahl Fluggeräusch- ereignisse | | [%] | | Ausfall | L _{p,A,eq,(24h)} 06:00-05:59 h [dB] | L _{p,A,eq,Tag} 06:00-21:59 h [dB] | L _{p,A,eq,Nacht} 22:00-05:59 h [dB] | L _{p,A,eq,FI,(24h)} 06:00-05:59 h [dB] | L _{p,A,eq,FI,Tag} 06:00-21:59 h [dB] | L _{p,A,eq,FI,Nacht} 22:00-05:59 h [dB] | |
| | Tag | Nacht | Tag | Nacht | Tag | Nacht | | | | | | | | |
| 01.01.2025 | 0 | 0 | 0 | 0 | | | | | | | | | | |
| 02.01.2025 | 14 | 0 | 14 | 0 | 100.0 | | Die Messanlage 1 hat vom 1. – 14. Januar 2025 keine Geräusche registriert. Entsprechend ist eine Ausweisung des Gesamtgeräusches nicht möglich. Die ausgewiesenen Fluggeräusche wurden für jeden Kalendertag für die nach Flugbuch verkehrten Flugzeugmuster rechnerisch ermittelt. Hierzu wurden statistische Überflugpegel aus Messungen der letzten Jahre herangezogen. | | | | 42.9 | 44.6 | | |
| 03.01.2025 | 7 | 0 | 7 | 0 | 100.0 | | | | | | | 42.6 | 44.3 | |
| 04.01.2025 | 4 | 0 | 4 | 0 | 100.0 | | | | | | | 41.5 | 43.2 | |
| 05.01.2025 | 6 | 0 | 6 | 0 | 100.0 | | | | | | | 41.2 | 42.9 | |
| 06.01.2025 | 4 | 0 | 4 | 0 | 100.0 | | | | | | | 35.9 | 37.7 | |
| 07.01.2025 | 2 | 0 | 2 | 0 | 100.0 | | | | | | | 30.5 | 32.3 | |
| 08.01.2025 | 0 | 0 | 0 | 0 | | | | | | | | | | |
| 09.01.2025 | 0 | 0 | 0 | 0 | | | | | | | | | | |
| 10.01.2025 | 3 | 0 | 3 | 0 | 100.0 | | | | | | | 31.4 | 33.1 | |
| 11.01.2025 | 9 | 0 | 9 | 0 | 100.0 | | | | | | | 37.2 | 39.0 | |
| 12.01.2025 | 13 | 0 | 13 | 0 | 100.0 | | | | | | | 39.6 | 41.4 | |
| 13.01.2025 | 9 | 0 | 9 | 0 | 100.0 | | | | | | | 31.7 | 33.4 | |
| 14.01.2025 | 2 | 0 | 2 | 0 | 100.0 | | | | | | | 35.5 | 37.3 | |
| 15.01.2025 | 19 | 0 | 19 | 0 | 100.0 | | | | | 54.2 x | 54.4 x | 53.9 | 35.4 | 37.2 |
| 16.01.2025 | 0 | 0 | 0 | 0 | | | | | 55.2 | 55.1 | 55.5 | | | |
| 17.01.2025 | 0 | 0 | 0 | 0 | | | | | 55.4 | 55.8 | 54.6 | | | |
| 18.01.2025 | 12 | 0 | 12 | 0 | 100.0 | | | | 51.2 | 52.6 | 45.0 | 34.3 | 36.1 | |
| 19.01.2025 | 19 | 0 | 19 | 0 | 100.0 | | | | 48.0 | 48.4 | 47.2 | 38.9 | 40.6 | |
| 20.01.2025 | 0 | 0 | 0 | 0 | | | | | 51.8 | 49.9 | 54.2 | | | |
| 21.01.2025 | 0 | 0 | 0 | 0 | | | | | 55.3 | 56.2 | 52.7 | | | |
| 22.01.2025 | 7 | 0 | 7 | 0 | 100.0 | | | | 48.8 | 49.2 | 48.0 | 25.3 | 27.1 | |
| 23.01.2025 | 5 | 0 | 5 | 0 | 100.0 | | | | 60.0 | 61.1 | 56.0 | 37.0 | 38.8 | |
| 24.01.2025 | 2 | 0 | 2 | 0 | 100.0 | | | | 62.3 | 63.4 | 58.2 | 41.6 | 43.4 | |
| 25.01.2025 | 1 | 0 | 1 | 0 | 100.0 | | | | 57.8 | 57.9 | 57.5 | 27.8 | 29.6 | |

| Datum | Ereignisse | | | | Verfügbarkeit | | | Gesamtgeräusch (Äquivalenter Dauerschalldruckpegel) | | | Fluggeräusch (Äquivalenter Dauerschalldruckpegel) | | |
|--------------------|--------------------------|----------|---------------------------------------|----------|---------------|-------|---------|--|--|--|---|---|---|
| | Anzahl Flugbewegungen | | Anzahl Fluggeräusch- ereignisse | | [%] | | Ausfall | L _{p,A,eq,(24h)} 06:00-05:59 h [dB] | L _{p,A,eq,Tag} 06:00-21:59 h [dB] | L _{p,A,eq,Nacht} 22:00-05:59 h [dB] | L _{p,A,eq,Fl,(24h)} 06:00-05:59 h [dB] | L _{p,A,eq,Fl,Tag} 06:00-21:59 h [dB] | L _{p,A,eq,Fl,Nacht} 22:00-05:59 h [dB] |
| | Tag | Nacht | Tag | Nacht | Tag | Nacht | | | | | | | |
| 26.01.2025 | 8 | 0 | 8 | 0 | 100.0 | | | 55.5 | 54.0 | 57.6 | 30.4 | 32.2 | |
| 27.01.2025 | 0 | 0 | 0 | 0 | | | | 57.9 | 58.9 | 54.8 | | | |
| 28.01.2025 | 9 | 0 | 9 | 0 | 100.0 | | | 52.9 | 54.2 | 47.6 | 36.6 | 38.4 | |
| 29.01.2025 | 2 | 0 | 2 | 0 | 100.0 | | | 55.7 | 54.7 | 57.2 | 35.9 | 37.7 | |
| 30.01.2025 | 0 | 0 | 0 | 0 | | | | 61.1 | 58.4 | 64.0 | | | |
| 31.01.2025 | 5 | 0 | 5 | 0 | 100.0 | | | 62.8 ^x | 63.2 | 54.6 ^x | 38.6 | 39.1 | |
| Summenwerte | 162 | 0 | 162 | 0 | 100.0 | | | 57.6 ^x | 57.8 ^x | 56.4 ^x | 36.6 | 38.3 | |

Eine von 100 % abweichende Verfügbarkeit erfasster Fluglärmereignisse ergibt sich durch „technischen oder wetterbedingtem Ausfall“ (was entsprechend vermerkt wird) oder durch messtechnisch nicht erfasster Flugbewegungen, was i. d. R. bei 1 - motorigen Flugzeugen und Hubschraubern auftreten kann, wenn der An - und Abflug im Bereich der Messstationen nicht entlang der „Centerline“ erfolgt.

^x Der Wert ist nicht aus dem ganzen Intervall ausgerechnet.

T = Technischer Ausfall; W = Wetterbedingter Ausfall

3.2 Statistik Standort 2 - Keitum/Sylt-Ost, Park & Ride Parkplatz

| Datum | Ereignisse | | | | Verfügbarkeit | | | Gesamtgeräusch (Äquivalenter Dauerschalldruckpegel) | | | Fluggeräusch (Äquivalenter Dauerschalldruckpegel) | | |
|------------|--------------------------|-------|---------------------------------------|-------|---------------|-------|---------|--|--|--|---|---|---|
| | Anzahl Flugbewegungen | | Anzahl Fluggeräusch- ereignisse | | [%] | | Ausfall | L _{p,A,eq,(24h)} 06:00-05:59 h [dB] | L _{p,A,eq,Tag} 06:00-21:59 h [dB] | L _{p,A,eq,Nacht} 22:00-05:59 h [dB] | L _{p,A,eq,Fl,(24h)} 06:00-05:59 h [dB] | L _{p,A,eq,Fl,Tag} 06:00-21:59 h [dB] | L _{p,A,eq,Fl,Nacht} 22:00-05:59 h [dB] |
| | Tag | Nacht | Tag | Nacht | Tag | Nacht | | | | | | | |
| 01.01.2025 | 0 | 0 | 0 | 0 | | | | 81.2 | 83.0 | 61.6 | | | |
| 02.01.2025 | 12 | 0 | 12 | 0 | 100.0 | | | 60.5 | 61.0 | 59.4 | 48.8 | 50.6 | |
| 03.01.2025 | 8 | 0 | 8 | 0 | 100.0 | | | 64.6 | 66.2 | 52.9 | 49.2 | 51.0 | |
| 04.01.2025 | 6 | 0 | 6 | 0 | 100.0 | | | 57.3 | 58.9 | 47.9 | 44.4 | 46.2 | |
| 05.01.2025 | 6 | 0 | 6 | 0 | 100.0 | | | 60.2 | 58.4 | 62.4 | 43.0 | 44.8 | |
| 06.01.2025 | 5 | 0 | 5 | 0 | 100.0 | | | 81.5 | 79.2 | 84.1 | 46.4 | 48.1 | |
| 07.01.2025 | 2 | 0 | 2 | 0 | 100.0 | | | 73.0 | 73.0 | 73.1 | 45.5 | 47.2 | |
| 08.01.2025 | 0 | 0 | 0 | 0 | | | | 64.9 | 66.6 | 45.1 | | | |
| 09.01.2025 | 3 | 0 | 3 | 0 | 100.0 | | | 56.4 | 58.0 | 47.0 | 40.9 | 42.6 | |
| 10.01.2025 | 4 | 0 | 4 | 0 | 100.0 | | | 56.2 | 57.7 | 47.8 | 39.5 | 41.2 | |
| 11.01.2025 | 11 | 0 | 11 | 0 | 100.0 | | | 55.9 | 57.5 | 46.2 | 44.1 | 45.9 | |
| 12.01.2025 | 14 | 0 | 14 | 0 | 100.0 | | | 52.5 | 54.0 | 45.1 | 39.8 | 41.6 | |
| 13.01.2025 | 12 | 0 | 12 | 0 | 100.0 | | | 65.5 | 65.1 | 66.1 | 44.3 | 46.1 | |
| 14.01.2025 | 2 | 0 | 2 | 0 | 100.0 | | | 59.5 | 61.0 | 51.7 | 42.7 | 44.5 | |
| 15.01.2025 | 19 | 0 | 19 | 0 | 100.0 | | | 56.0 | 57.4 | 50.0 | 40.1 | 41.8 | |
| 16.01.2025 | 0 | 0 | 0 | 0 | | | | 57.4 | 58.3 | 54.9 | | | |
| 17.01.2025 | 1 | 0 | 1 | 0 | 100.0 | | | 59.0 | 60.6 | 47.8 | 38.7 | 40.5 | |
| 18.01.2025 | 12 | 0 | 12 | 0 | 100.0 | | | 53.7 | 55.2 | 45.6 | 39.6 | 41.4 | |
| 19.01.2025 | 20 | 0 | 20 | 0 | 100.0 | | | 52.1 | 53.7 | 41.9 | 41.1 | 42.9 | |
| 20.01.2025 | 0 | 0 | 0 | 0 | | | | 57.7 | 56.8 | 59.1 | | | |
| 21.01.2025 | 0 | 0 | 0 | 0 | | | | 61.0 | 62.3 | 55.3 | | | |
| 22.01.2025 | 9 | 0 | 9 | 0 | 100.0 | | | 55.7 | 57.2 | 48.4 | 38.9 | 40.7 | |
| 23.01.2025 | 4 | 0 | 4 | 0 | 100.0 | | | 61.9 | 61.7 | 62.2 | 36.8 | 38.6 | |
| 24.01.2025 | 1 | 0 | 1 | 0 | 100.0 | | | 71.3 | 73.0 | 60.4 | 44.7 | 46.5 | |
| 25.01.2025 | 2 | 0 | 2 | 0 | 100.0 | | | 56.5 | 58.1 | 45.2 | 39.5 | 41.3 | |
| 26.01.2025 | 8 | 0 | 8 | 0 | 100.0 | | | 55.6 | 53.7 | 57.8 | 34.7 | 36.4 | |
| 27.01.2025 | 0 | 0 | 0 | 0 | | | | 64.9 | 66.5 | 55.7 | | | |

| Datum | Ereignisse | | | | Verfügbarkeit | | | Gesamtgeräusch (Äquivalenter Dauerschalldruckpegel) | | | Fluggeräusch (Äquivalenter Dauerschalldruckpegel) | | |
|--------------------|--------------------------|----------|---------------------------------------|----------|---------------|-------|---------|--|--|--|---|---|---|
| | Anzahl Flugbewegungen | | Anzahl Fluggeräusch- ereignisse | | [%] | | Ausfall | L _{p,A,eq,(24h)} 06:00-05:59 h [dB] | L _{p,A,eq,Tag} 06:00-21:59 h [dB] | L _{p,A,eq,Nacht} 22:00-05:59 h [dB] | L _{p,A,eq,Fl,(24h)} 06:00-05:59 h [dB] | L _{p,A,eq,Fl,Tag} 06:00-21:59 h [dB] | L _{p,A,eq,Fl,Nacht} 22:00-05:59 h [dB] |
| | Tag | Nacht | Tag | Nacht | Tag | Nacht | | | | | | | |
| 28.01.2025 | 10 | 0 | 10 | 0 | 100.0 | | | 56.9 | 58.4 | 49.2 | 43.5 | 45.2 | |
| 29.01.2025 | 4 | 0 | 4 | 0 | 100.0 | | | 60.3 | 59.2 | 61.9 | 43.5 | 45.3 | |
| 30.01.2025 | 1 | 0 | 1 | 0 | 100.0 | | | 56.9 | 57.4 | 55.6 | 38.0 | 39.8 | |
| 31.01.2025 | 8 | 0 | 8 | 0 | 100.0 | | | 58.8 ^x | 59.2 | 48.3 ^x | 46.8 | 47.3 | |
| Summenwerte | 184 | 0 | 184 | 0 | 100.0 | | | 70.3^x | 70.6 | 69.8^x | 42.7 | 44.4 | 0.0 |

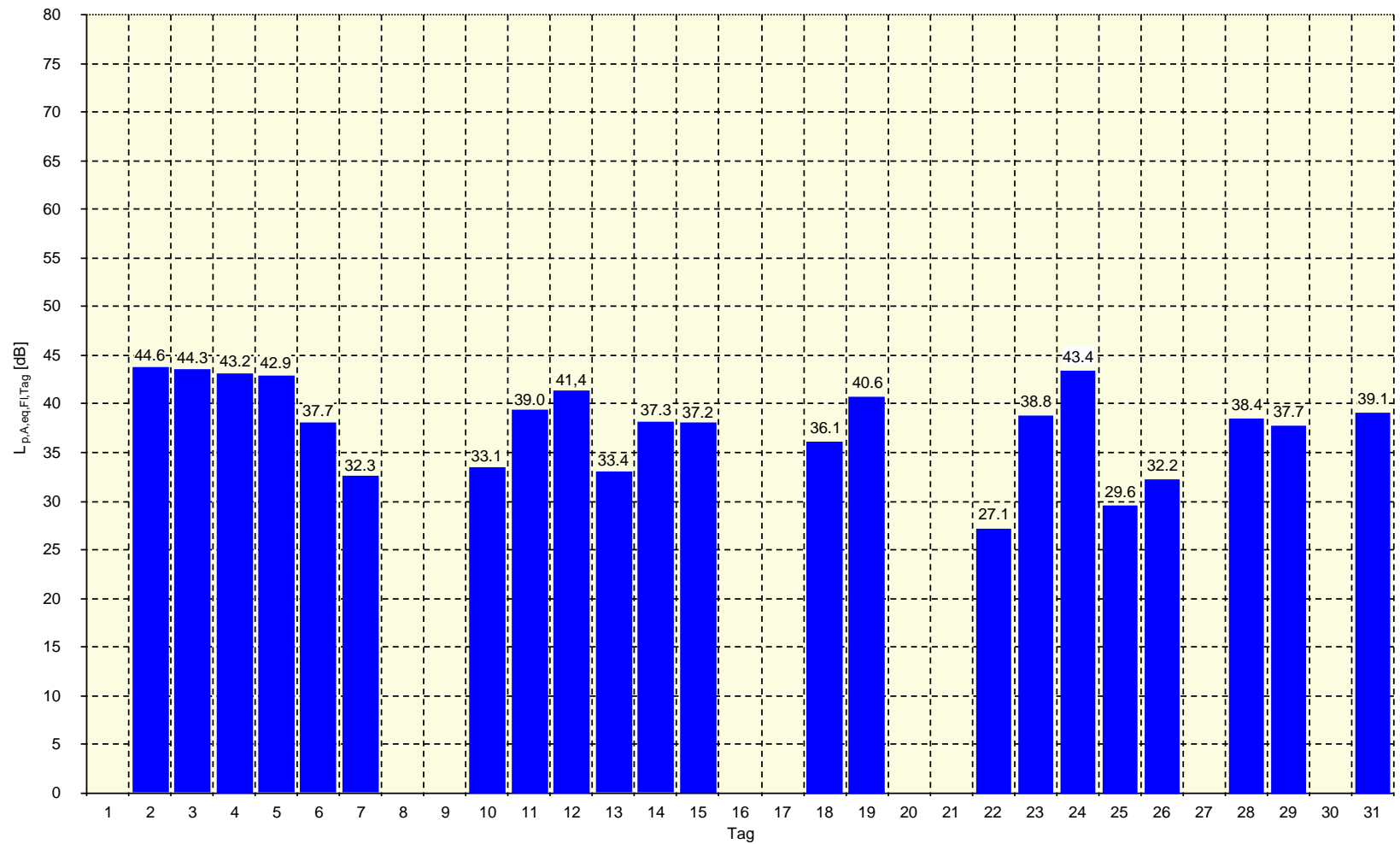
Eine von 100 % abweichende Verfügbarkeit erfasster Fluglärmereignisse ergibt sich durch „technischen oder wetterbedingtem Ausfall“ (was entsprechend vermerkt wird) oder durch messtechnisch nicht erfasster Flugbewegungen, was i. d. R. bei 1 - motorigen Flugzeugen und Hubschraubern auftreten kann, wenn der An - und Abflug im Bereich der Messstationen nicht entlang der „Centerline“ erfolgt.

^x Der Wert ist nicht aus dem ganzen Intervall ausgerechnet.

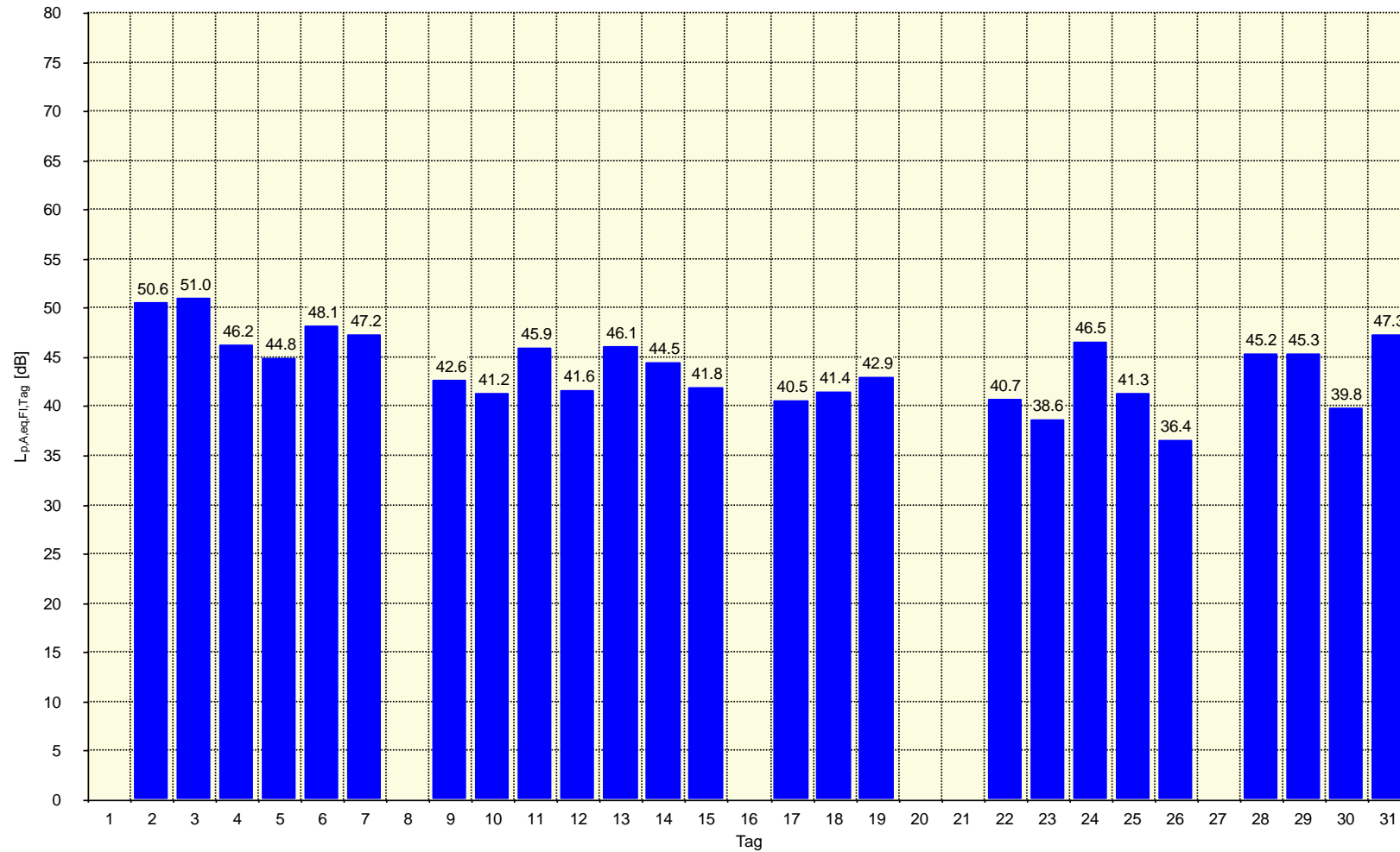
T = Technischer Ausfall; W = Wetterbedingter Ausfall

4 Äquivalenter Dauerschallpegel $L_{p,A,eq,FI,Tag}$ jedes Tages (Fluggeräusch)

4.1 $L_{p,A,eq,FI,Tag}$ Standort 1 - Wenningstedt, Dünenstraße 17



4.2 $L_{p,A,eq,FI,Tag}$ Standort 2 - Keitum/Sylt-Ost, Park & Ride Parkplatz



5 Äquivalenter Dauerschallpegel $L_{p,A,eq,FI,Nacht}$ jeder Nacht (Fluggeräusch)

5.1 $L_{p,A,eq,FI,Nacht}$ Standort 1 - Wenningstedt, Dünenstraße 17

Im Januar 2025 wurden keine Nachtflüge registriert!

5.2 $L_{p,A,eq,FI,Nacht}$ Standort 2 - Keitum/Sylt-Ost, Park & Ride Parkplatz

Im Januar 2025 wurden keine Nachtflüge registriert!

6 Stundenbezogene äquivalente Dauerschallpegel $L_{p,A,eq,1h}$ (Gesamtgeräusch)

6.1 $L_{p,A,eq,1h}$ Standort 1 - Wenningstedt, Dünenstraße 17

| | Äquivalenter Dauerschalldruckpegel $L_{p,A,eq,1h}$ [dB] | | | | | | | | | | | | | | | | | | | | | | | | | | | |
|-----------------------------------|---|---------------|---------------|---------------|---------------|---------------|---------------|---------------|---------------|---------------|---------------|---------------|---------------|---------------|---------------|---------------|---------------|---------------|---------------|---------------|---------------|---------------|---------------|---------------|-------|-------|-------|------|
| | 06:00 - 06:59 | 07:00 - 07:59 | 08:00 - 08:59 | 09:00 - 09:59 | 10:00 - 10:59 | 11:00 - 11:59 | 12:00 - 12:59 | 13:00 - 13:59 | 14:00 - 14:59 | 15:00 - 15:59 | 16:00 - 16:59 | 17:00 - 17:59 | 18:00 - 18:59 | 19:00 - 19:59 | 20:00 - 20:59 | 21:00 - 21:59 | 22:00 - 22:59 | 23:00 - 23:59 | 00:00 - 00:59 | 01:00 - 01:59 | 02:00 - 02:59 | 03:00 - 03:59 | 04:00 - 04:59 | 05:00 - 05:59 | | | | |
| 01.01.2025 | | | | | | | | | | | | | | | | | | | | | | | | | | | | |
| 02.01.2025 | | | | | | | | | | | | | | | | | | | | | | | | | | | | |
| 03.01.2025 | | | | | | | | | | | | | | | | | | | | | | | | | | | | |
| 04.01.2025 | | | | | | | | | | | | | | | | | | | | | | | | | | | | |
| 05.01.2025 | | | | | | | | | | | | | | | | | | | | | | | | | | | | |
| 06.01.2025 | | | | | | | | | | | | | | | | | | | | | | | | | | | | |
| 07.01.2025 | | | | | | | | | | | | | | | | | | | | | | | | | | | | |
| 08.01.2025 | | | | | | | | | | | | | | | | | | | | | | | | | | | | |
| 09.01.2025 | | | | | | | | | | | | | | | | | | | | | | | | | | | | |
| 10.01.2025 | | | | | | | | | | | | | | | | | | | | | | | | | | | | |
| 11.01.2025 | | | | | | | | | | | | | | | | | | | | | | | | | | | | |
| 12.01.2025 | | | | | | | | | | | | | | | | | | | | | | | | | | | | |
| 13.01.2025 | | | | | | | | | | | | | | | | | | | | | | | | | | | | |
| 14.01.2025 | | | | | | | | | | | | | | | | | | | | | | | | | | | | |
| 15.01.2025 | | | | | | | | | | | | | | 53.3* | 54.8 | 54.8 | 54.3 | 54.6 | 54.4 | 53.8 | 53.1 | 53.9 | 53.7 | 52.5 | 54.2 | 54.5 | 54.4 | 54.8 |
| 16.01.2025 | 54.3 | 54.2 | 55.6 | 56.5 | 54.9 | 55.7 | 55.7 | 55.8 | 55.7 | 55.2 | 54.9 | 54.8 | 54.3 | 54.3 | 54.4 | 54.6 | 55.2 | 55.5 | 55.6 | 55.6 | 55.5 | 55.7 | 55.7 | 55.0 | 55.0 | 55.0 | 55.0 | |
| 17.01.2025 | 54.9 | 54.6 | 55.1 | 55.5 | 55.9 | 56.4 | 56.8 | 56.6 | 56.6 | 56.7 | 56.8 | 55.7 | 55.4 | 54.6 | 54.6 | 54.3 | 54.4 | 54.7 | 55.3 | 55.5 | 55.0 | 54.3 | 54.0 | 53.5 | 53.5 | 53.5 | 53.5 | |
| 18.01.2025 | 53.5 | 53.2 | 53.0 | 53.3 | 52.8 | 53.2 | 56.2 | 53.5 | 52.7 | 53.3 | 51.6 | 51.8 | 51.1 | 49.1 | 48.4 | 48.3 | 46.8 | 46.1 | 45.8 | 45.3 | 44.0 | 42.9 | 43.5 | 44.3 | 44.3 | 44.3 | 44.3 | |
| 19.01.2025 | 46.2 | 46.0 | 47.1 | 47.5 | 52.8 | 47.7 | 46.5 | 50.7 | 49.7 | 49.1 | 49.2 | 46.1 | 45.1 | 47.6 | 48.3 | 46.2 | 45.3 | 44.9 | 47.4 | 49.5 | 49.1 | 47.5 | 44.5 | 46.2 | 46.2 | 46.2 | 46.2 | |
| 20.01.2025 | 46.9 | 52.8 | 52.1 | 50.1 | 49.9 | 50.8 | 49.7 | 49.8 | 50.0 | 49.1 | 48.8 | 48.4 | 48.5 | 49.6 | 49.0 | 49.3 | 49.7 | 53.6 | 54.7 | 53.7 | 54.2 | 54.6 | 54.9 | 55.8 | 55.8 | 55.8 | 55.8 | |
| 21.01.2025 | 55.4 | 57.1 | 58.2 | 57.0 | 55.7 | 56.6 | 60.4 | 55.5 | 55.3 | 55.2 | 55.2 | 55.0 | 54.0 | 54.4 | 54.2 | 53.8 | 53.4 | 53.3 | 53.5 | 53.1 | 52.9 | 52.6 | 51.6 | 50.4 | 50.4 | 50.4 | 50.4 | |
| 22.01.2025 | 48.7 | 49.6 | 51.2 | 52.1 | 51.8 | 51.6 | 48.5 | 46.7 | 48.1 | 48.7 | 49.3 | 49.4 | 46.6 | 45.1 | 44.5 | 44.4 | 45.9 | 45.9 | 45.8 | 48.5 | 49.7 | 48.6 | 49.1 | 48.5 | 48.5 | 48.5 | 48.5 | |
| 23.01.2025 | 48.2 | 50.1 | 58.3 | 63.4 | 60.8 | 61.5 | 63.4 | 62.2 | 63.6 | 65.8 | 63.3 | 59.4 | 57.6 | 57.3 | 57.0 | 57.3 | 56.1 | 56.1 | 55.6 | 55.4 | 55.2 | 55.8 | 56.6 | 56.6 | 56.6 | 56.6 | 56.6 | |
| 24.01.2025 | 57.2 | 57.0 | 57.5 | 59.3 | 60.4 | 61.6 | 65.8 | 68.3 | 67.2 | 66.5 | 65.1 | 62.7 | 62.1 | 62.0 | 59.3 | 59.9 | 60.2 | 58.8 | 57.1 | 57.1 | 57.4 | 57.7 | 58.0 | 58.6 | 58.6 | 58.6 | 58.6 | |
| 25.01.2025 | 57.8 | 57.7 | 57.7 | 57.9 | 57.3 | 57.3 | 58.9 | 59.7 | 58.3 | 57.2 | 57.5 | 57.9 | 57.7 | 57.6 | 57.6 | 57.6 | 57.7 | 57.5 | 58.2 | 57.4 | 58.2 | 57.6 | 56.8 | 56.6 | 56.6 | 56.6 | 56.6 | |
| 26.01.2025 | 56.0 | 55.3 | 55.6 | 55.9 | 54.6 | 53.2 | 53.2 | 53.9 | 53.2 | 53.2 | 54.2 | 54.9 | 52.9 | 51.6 | 50.8 | 50.7 | 51.1 | 52.6 | 57.4 | 56.3 | 60.1 | 58.8 | 59.4 | 58.1 | 58.1 | 58.1 | 58.1 | |
| 27.01.2025 | 58.0 | 60.0 | 60.9 | 61.3 | 62.7 | 61.7 | 59.5 | 58.1 | 57.3 | 57.7 | 57.7 | 56.8 | 55.1 | 54.8 | 54.9 | 55.0 | 55.2 | 55.9 | 55.1 | 54.7 | 54.9 | 54.8 | 53.8 | 53.5 | 53.5 | 53.5 | 53.5 | |
| 28.01.2025 | 53.8 | 55.6 | 56.0 | 56.1 | 59.5 | 56.4 | 55.3 | 53.5 | 53.2 | 52.5 | 50.8 | 50.8 | 48.7 | 49.9 | 47.7 | 49.0 | 48.7 | 48.7 | 47.9 | 47.7 | 47.8 | 47.3 | 45.7 | 45.8 | 45.8 | 45.8 | 45.8 | |
| 29.01.2025 | 47.0 | 47.9 | 50.0 | 56.1 | 54.0 | 51.9 | 51.5 | 50.6 | 58.7 | 57.7 | 55.2 | 55.2 | 54.9 | 55.9 | 55.7 | 55.9 | 57.8 | 59.0 | 57.9 | 56.6 | 56.5 | 57.0 | 56.3 | 55.9 | 55.9 | 55.9 | 55.9 | |
| 30.01.2025 | 57.8 | 61.3 | 58.8 | 59.0 | 59.9 | 58.4 | 58.7 | 58.6 | 58.7 | 59.1 | 57.5 | 57.0 | 56.5 | 56.4 | 56.4 | 56.3 | 56.1 | 57.1 | 59.4 | 59.8 | 59.7 | 61.0 | 69.6 | 67.8 | 67.8 | 67.8 | 67.8 | |
| 31.01.2025 | 68.4 | 65.9 | 68.6 | 67.7 | 64.0 | 62.0 | 61.1 | 59.4 | 58.5 | 57.1 | 56.3 | 55.9 | 55.0 | 54.9 | 55.0 | 54.8 | 54.6 | 54.6 | | | | | | | | | | |
| Stundenbezogener Monatsmittelwert | 58.5* | 57.9* | 59.3* | 59.6* | 58.5* | 57.9* | 59.1* | 59.4* | 59.1* | 59.2* | 57.7* | 56.2* | 55.4* | 55.3* | 54.6* | 54.7* | 54.8* | 55.0* | 55.4* | 55.1* | 55.7* | 55.7* | 59.3* | 58.1* | 58.1* | 58.1* | 58.1* | |

Die Messanlage 1 hat vom 1. – 14. Januar 2025 keine Geräusche registriert. Entsprechend ist eine Ausweisung des Gesamtgeräusches nicht möglich. Die ausgewiesenen Fluggeräusche wurden für jeden Kalendertag für die nach Flugbuch verkehrten Flugzeugmuster rechnerisch ermittelt. Hierzu wurden statistische Überflugpegel aus Messungen der letzten Jahre herangezogen.

Hauptsächlich von Fluggeräusch verursacht

* Der Wert ist nicht aus dem ganzen Intervall ausgerechnet.

6.2 L_{p,A,eq,1h} Standort 2 - Keitum/Sylt-Ost, Park & Ride Parkplatz

| | Äquivalenter Dauerschalldruckpegel L _{p,A,eq,1h} [dB] | | | | | | | | | | | | | | | | | | | | | | | |
|-----------------------------------|--|---------------|---------------|---------------|---------------|---------------|---------------|---------------|---------------|---------------|---------------|---------------|---------------|---------------|---------------|---------------|---------------|---------------|-------------------|-------------------|-------------------|-------------------|-------------------|-------------------|
| | 06:00 - 06:59 | 07:00 - 07:59 | 08:00 - 08:59 | 09:00 - 09:59 | 10:00 - 10:59 | 11:00 - 11:59 | 12:00 - 12:59 | 13:00 - 13:59 | 14:00 - 14:59 | 15:00 - 15:59 | 16:00 - 16:59 | 17:00 - 17:59 | 18:00 - 18:59 | 19:00 - 19:59 | 20:00 - 20:59 | 21:00 - 21:59 | 22:00 - 22:59 | 23:00 - 23:59 | 00:00 - 00:59 | 01:00 - 01:59 | 02:00 - 02:59 | 03:00 - 03:59 | 04:00 - 04:59 | 05:00 - 05:59 |
| 01.01.2025 | 81.1 | 82.1 | 83.2 | 85.7 | 87.0 | 87.5 | 88.3 | 86.3 | 80.9 | 69.0 | 62.0 | 63.3 | 69.1 | 64.0 | 59.5 | 59.8 | 60.2 | 61.3 | 60.9 | 62.3 | 63.4 | 61.5 | 61.7 | 60.8 |
| 02.01.2025 | 59.4 | 58.7 | 57.6 | 61.5 | 62.7 | 61.0 | 61.9 | 63.2 | 64.2 | 62.2 | 61.8 | 61.0 | 58.8 | 60.5 | 56.7 | 55.9 | 56.9 | 52.8 | 59.2 | 53.1 | 49.9 | 56.1 | 59.3 | 65.9 |
| 03.01.2025 | 69.3 | 70.4 | 65.9 | 67.7 | 68.3 | 69.4 | 67.2 | 64.0 | 63.0 | 65.4 | 61.3 | 61.6 | 59.2 | 62.2 | 63.8 | 61.3 | 60.6 | 50.7 | 45.1 | 42.6 | 38.2 | 47.0 | 49.1 | 50.3 |
| 04.01.2025 | 55.4 | 56.2 | 55.9 | 58.4 | 60.8 | 63.4 | 61.6 | 60.0 | 59.8 | 60.9 | 59.8 | 57.5 | 55.8 | 56.3 | 53.0 | 49.7 | 47.7 | 44.3 | 43.7 | 42.3 | 42.7 | 42.6 | 49.6 | 53.7 |
| 05.01.2025 | 52.5 | 53.3 | 54.1 | 55.4 | 55.8 | 56.9 | 56.9 | 57.7 | 57.3 | 58.6 | 64.0 | 59.5 | 59.3 | 58.3 | 58.9 | 60.4 | 62.0 | 61.2 | 58.1 | 59.7 | 52.9 | 63.4 | 66.2 | 64.6 |
| 06.01.2025 | 68.5 | 68.7 | 68.8 | 66.3 | 66.2 | 69.0 | 67.2 | 68.0 | 68.7 | 68.4 | 66.4 | 77.5 | 87.2 | 84.4 | 83.9 | 81.9 | 81.2 | 85.2 | 84.8 | 84.7 | 84.2 | 84.7 | 84.8 | 81.9 |
| 07.01.2025 | 75.7 | 76.8 | 71.7 | 75.0 | 75.4 | 72.6 | 70.7 | 72.6 | 72.0 | 71.6 | 71.1 | 68.4 | 69.8 | 72.2 | 72.6 | 69.9 | 72.0 | 73.0 | 74.5 | 75.6 | 73.5 | 73.0 | 70.3 | 70.0 |
| 08.01.2025 | 68.5 | 71.1 | 70.1 | 70.3 | 68.4 | 67.9 | 67.9 | 66.3 | 64.8 | 62.2 | 62.5 | 63.1 | 55.6 | 53.5 | 53.0 | 49.6 | 48.2 | 45.0 | 41.6 | 45.3 | 39.4 | 40.2 | 39.2 | 49.3 |
| 09.01.2025 | 54.7 | 58.1 | 59.8 | 59.1 | 60.8 | 60.3 | 60.0 | 58.8 | 58.8 | 58.7 | 58.3 | 56.8 | 54.9 | 53.4 | 52.0 | 50.7 | 47.1 | 43.4 | 40.3 | 45.1 | 39.0 | 36.0 | 41.3 | 54.2 |
| 10.01.2025 | 54.5 | 57.8 | 59.2 | 59.5 | 59.1 | 60.0 | 59.8 | 58.7 | 58.8 | 58.3 | 58.4 | 56.0 | 54.6 | 52.6 | 51.7 | 52.6 | 51.2 | 49.1 | 48.3 | 47.6 | 45.6 | 46.7 | 45.2 | 45.1 |
| 11.01.2025 | 55.4 | 50.6 | 52.9 | 55.1 | 57.5 | 58.8 | 59.6 | 60.5 | 60.8 | 59.8 | 56.9 | 57.2 | 55.5 | 57.5 | 55.6 | 51.8 | 50.1 | 45.9 | 44.6 | 46.0 | 42.3 | 46.5 | 44.7 | 45.3 |
| 12.01.2025 | 44.1 | 46.0 | 52.4 | 53.5 | 55.8 | 55.9 | 56.4 | 55.7 | 56.3 | 56.3 | 56.5 | 54.3 | 52.7 | 50.8 | 49.5 | 47.1 | 45.0 | 43.8 | 42.8 | 38.4 | 44.3 | 44.8 | 45.2 | 49.3 |
| 13.01.2025 | 54.0 | 59.1 | 59.6 | 59.3 | 61.1 | 63.3 | 63.1 | 66.7 | 65.5 | 65.7 | 65.0 | 65.7 | 66.1 | 66.5 | 68.1 | 70.1 | 69.8 | 68.4 | 67.4 | 65.7 | 64.0 | 59.9 | 63.3 | 62.2 |
| 14.01.2025 | 63.1 | 63.8 | 62.8 | 63.6 | 63.1 | 63.0 | 60.8 | 61.1 | 61.2 | 60.0 | 58.9 | 57.1 | 56.3 | 56.0 | 54.0 | 52.7 | 51.5 | 50.6 | 54.0 | 52.3 | 50.5 | 51.0 | 50.9 | 51.6 |
| 15.01.2025 | 53.4 | 57.6 | 58.7 | 59.2 | 59.8 | 59.2 | 59.1 | 58.3 | 58.2 | 58.3 | 58.2 | 56.7 | 53.8 | 52.1 | 50.7 | 49.3 | 46.7 | 43.4 | 43.1 | 44.5 | 52.8 | 52.8 | 51.6 | 51.9 |
| 16.01.2025 | 55.7 | 58.4 | 59.6 | 59.5 | 60.2 | 60.1 | 60.1 | 59.6 | 58.8 | 58.7 | 58.5 | 56.1 | 56.0 | 56.0 | 55.1 | 53.6 | 56.8 | 57.5 | 54.1 | 53.3 | 53.5 | 53.7 | 54.3 | 54.0 |
| 17.01.2025 | 56.9 | 57.7 | 58.4 | 60.1 | 60.5 | 60.9 | 60.4 | 60.3 | 60.4 | 61.2 | 59.2 | 68.5 | 55.2 | 53.1 | 51.8 | 51.8 | 49.7 | 49.6 | 50.0 | 47.2 | 47.4 | 45.1 | 43.4 | 45.6 |
| 18.01.2025 | 47.6 | 51.7 | 53.9 | 54.8 | 56.3 | 57.9 | 58.2 | 56.6 | 57.2 | 56.4 | 56.0 | 55.2 | 53.7 | 52.6 | 51.0 | 50.5 | 50.7 | 48.0 | 45.0 | 43.5 | 39.4 | 41.2 | 40.3 | 44.0 |
| 19.01.2025 | 45.1 | 47.0 | 52.2 | 53.3 | 55.2 | 55.4 | 55.6 | 55.6 | 56.2 | 55.8 | 56.6 | 53.6 | 52.2 | 50.5 | 49.2 | 47.2 | 44.6 | 42.0 | 40.5 | 36.9 | 35.8 | 38.9 | 38.8 | 46.3 |
| 20.01.2025 | 53.6 | 57.4 | 58.8 | 57.0 | 57.7 | 58.3 | 58.3 | 58.7 | 58.3 | 58.3 | 57.6 | 55.5 | 54.0 | 51.9 | 50.3 | 48.8 | 45.7 | 55.6 | 58.7 | 59.1 | 60.0 | 59.5 | 60.5 | 61.9 |
| 21.01.2025 | 63.0 | 64.3 | 64.5 | 63.4 | 63.2 | 64.3 | 64.8 | 63.2 | 62.8 | 61.0 | 60.5 | 59.8 | 58.0 | 58.6 | 57.2 | 57.3 | 60.0 | 58.5 | 55.5 | 53.4 | 52.4 | 47.1 | 47.2 | 51.1 |
| 22.01.2025 | 53.9 | 57.2 | 60.7 | 57.9 | 58.0 | 59.2 | 58.5 | 57.9 | 58.4 | 57.9 | 57.3 | 56.8 | 54.3 | 53.0 | 51.3 | 49.9 | 49.5 | 49.1 | 47.5 | 49.2 | 49.0 | 46.6 | 44.0 | 50.0 |
| 23.01.2025 | 56.7 | 58.5 | 59.3 | 58.8 | 60.1 | 59.1 | 59.4 | 61.4 | 63.9 | 63.5 | 59.4 | 64.4 | 58.3 | 60.8 | 65.1 | 65.3 | 63.5 | 61.3 | 60.6 | 60.0 | 58.9 | 60.7 | 65.0 | 63.8 |
| 24.01.2025 | 66.4 | 64.2 | 62.4 | 66.0 | 66.6 | 69.9 | 74.0 | 74.7 | 75.3 | 75.6 | 78.1 | 74.6 | 74.7 | 73.5 | 72.2 | 66.7 | 63.6 | 62.0 | 57.2 | 61.0 | 61.0 | 59.7 | 56.7 | 56.7 |
| 25.01.2025 | 54.4 | 55.6 | 56.5 | 57.4 | 61.1 | 60.3 | 62.9 | 62.9 | 57.8 | 56.5 | 57.2 | 55.5 | 53.9 | 52.7 | 51.0 | 49.2 | 49.4 | 46.8 | 44.4 | 42.6 | 42.4 | 45.6 | 41.5 | 42.3 |
| 26.01.2025 | 46.3 | 48.0 | 52.3 | 53.2 | 53.6 | 54.4 | 55.5 | 55.5 | 55.7 | 55.3 | 54.8 | 54.4 | 53.2 | 53.0 | 53.1 | 52.2 | 52.1 | 55.5 | 57.2 | 55.5 | 60.9 | 58.5 | 58.7 | 59.0 |
| 27.01.2025 | 58.4 | 61.8 | 63.4 | 66.4 | 69.4 | 73.4 | 71.8 | 68.7 | 66.2 | 63.3 | 60.2 | 56.9 | 54.2 | 54.7 | 54.2 | 53.0 | 50.3 | 50.2 | 52.3 | 54.1 | 56.1 | 60.0 | 54.6 | 58.1 |
| 28.01.2025 | 60.8 | 61.3 | 59.9 | 58.7 | 59.2 | 59.2 | 60.4 | 58.7 | 58.6 | 58.6 | 57.9 | 56.4 | 54.2 | 53.2 | 51.5 | 52.4 | 50.4 | 49.6 | 49.5 | 49.1 | 48.1 | 48.5 | 48.1 | 49.9 |
| 29.01.2025 | 54.4 | 58.2 | 58.4 | 58.0 | 59.0 | 58.7 | 58.8 | 61.3 | 61.5 | 61.6 | 60.6 | 59.4 | 59.8 | 58.7 | 55.7 | 55.9 | 60.3 | 64.2 | 66.7 | 61.0 | 59.4 | 60.7 | 55.7 | 55.8 |
| 30.01.2025 | 55.8 | 58.4 | 58.5 | 58.4 | 58.4 | 58.9 | 58.9 | 58.3 | 59.1 | 59.3 | 58.2 | 55.9 | 55.0 | 52.7 | 51.8 | 51.1 | 47.3 | 46.7 | 49.3 | 51.1 | 50.3 | 50.9 | 61.1 | 60.3 |
| 31.01.2025 | 63.4 | 59.3 | 60.6 | 59.9 | 60.7 | 61.4 | 60.2 | 60.5 | 59.2 | 58.9 | 57.5 | 56.9 | 55.1 | 53.0 | 52.4 | 51.1 | 49.5 | 46.5 | | | | | | |
| Stundenbezogener Monatsmittelwert | 68.2 | 69.3 | 69.3 | 71.6 | 72.8 | 73.3 | 73.9 | 72.3 | 68.4 | 64.9 | 65.5 | 66.0 | 72.8 | 70.3 | 69.8 | 67.9 | 67.4 | 70.7 | 70.6 ^x | 70.6 ^x | 70.0 ^x | 70.4 ^x | 70.4 ^x | 67.8 ^x |

^x Der Wert ist nicht aus dem ganzen Intervall ausgerechnet.

7 Stundenbezogene äquivalente Dauerschallpegel $L_{p,A,eq,FI,1h}$ (Fluggeräusch)

7.1 $L_{p,A,eq,FI,1h}$ Standort 1 - Wenningstedt, Dünenstraße 17

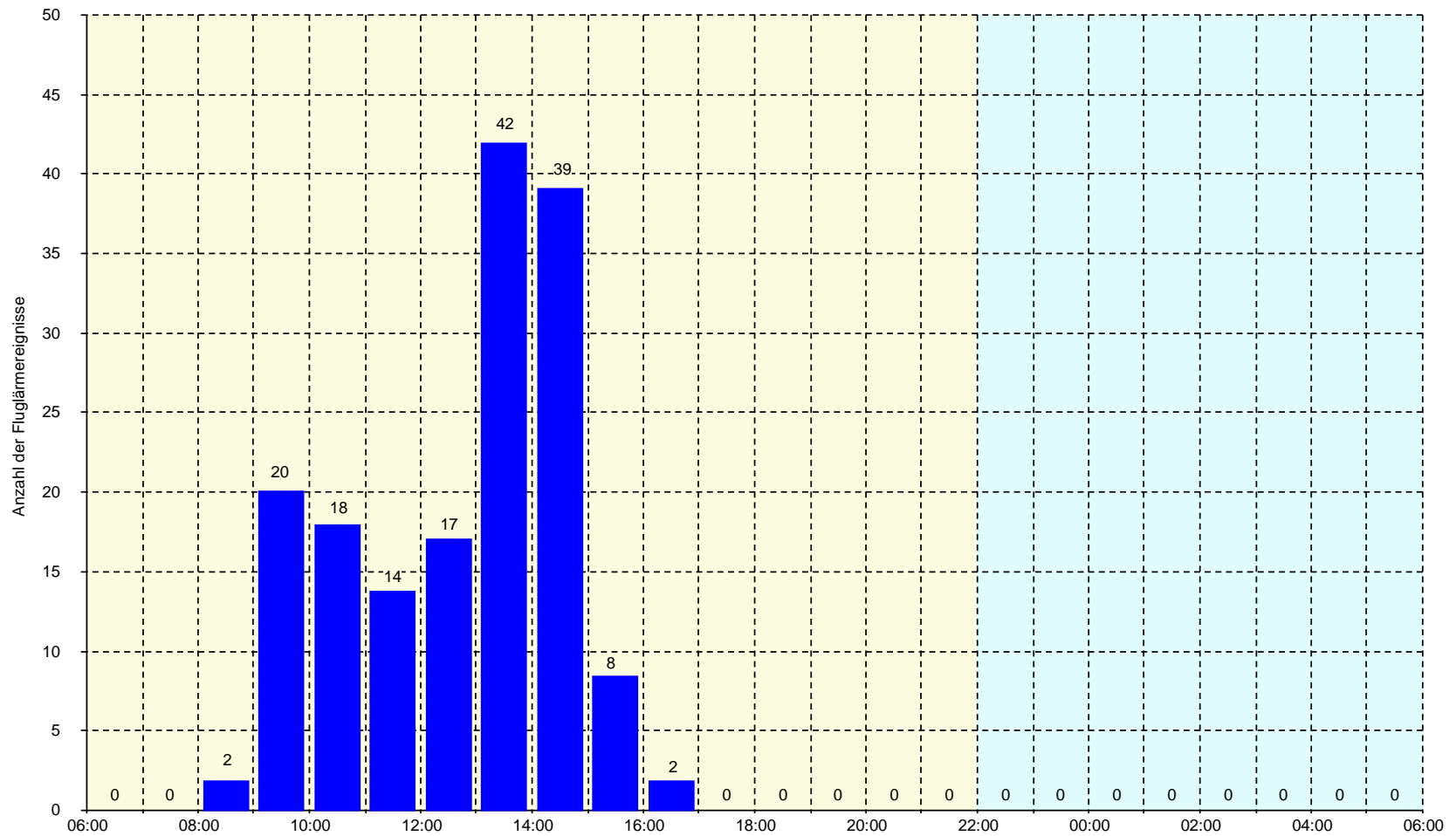
| | Äquivalenter Dauerschalldruckpegel $L_{p,A,eq,FI,1h}$ [dB] | | | | | | | | | | | | | | | | | | | | | | | | |
|-----------------------------------|--|---------------|---------------|---------------|---------------|---------------|---------------|---------------|---------------|---------------|---------------|---------------|---------------|---------------|---------------|---------------|---------------|---------------|---------------|---------------|---------------|---------------|---------------|---------------|--|
| | 06:00 - 06:59 | 07:00 - 07:59 | 08:00 - 08:59 | 09:00 - 09:59 | 10:00 - 10:59 | 11:00 - 11:59 | 12:00 - 12:59 | 13:00 - 13:59 | 14:00 - 14:59 | 15:00 - 15:59 | 16:00 - 16:59 | 17:00 - 17:59 | 18:00 - 18:59 | 19:00 - 19:59 | 20:00 - 20:59 | 21:00 - 21:59 | 22:00 - 22:59 | 23:00 - 23:59 | 00:00 - 00:59 | 01:00 - 01:59 | 02:00 - 02:59 | 03:00 - 03:59 | 04:00 - 04:59 | 05:00 - 05:59 | |
| 01.01.2025 | | | | | | | | | | | | | | | | | | | | | | | | | |
| 02.01.2025 | | | | | 47.9 | 49.9 | 48.0 | 49.4 | 49.6 | | 47.8 | | | | | | | | | | | | | | |
| 03.01.2025 | | | | | 43.0 | 44.0 | 47.8 | | 47.3 | 43.0 | 54.0 | | | | | | | | | | | | | | |
| 04.01.2025 | | | | | | 45.6 | 44.3 | 43.0 | | | | 54.0 | | | | | | | | | | | | | |
| 05.01.2025 | | | | | 48.0 | | 44.3 | | 49.8 | 51.1 | | | | | | | | | | | | | | | |
| 06.01.2025 | | | | | 46.1 | 42.4 | 42.4 | | | | 42.4 | | | | | | | | | | | | | | |
| 07.01.2025 | | | | | | | 44.3 | | | | | | | | | | | | | | | | | | |
| 08.01.2025 | | | | | | | | | | | | | | | | | | | | | | | | | |
| 09.01.2025 | | | | | | | | | | | | | | | | | | | | | | | | | |
| 10.01.2025 | | | | | | 43.8 | 36.4 | | | 36.4 | | | | | | | | | | | | | | | |
| 11.01.2025 | | | | | | | | 36.4 | 33.4 | 50.8 | | | | | | | | | | | | | | | |
| 12.01.2025 | | | | | | 46.3 | 46.7 | | 49.4 | 43.2 | 43.4 | | | | | | | | | | | | | | |
| 13.01.2025 | | | | | 45.5 | | | | | | | | | | | | | | | | | | | | |
| 14.01.2025 | | | | | | | | | | 47.8 | | 44.0 | | | | | | | | | | | | | |
| 15.01.2025 | | | | | | | | 43.4 | 45.5 | 44.2 | | | | | | | | | | | | | | | |
| 16.01.2025 | | | | | | | | | | | | | | | | | | | | | | | | | |
| 17.01.2025 | | | | | | | | | | | | | | | | | | | | | | | | | |
| 18.01.2025 | | | | | | | | 46.5 | 42.1 | 36.0 | | | | | | | | | | | | | | | |
| 19.01.2025 | | | | | 51.1 | 36.3 | 33.8 | 45.9 | 38.0 | 35.1 | 28.6 | | | | | | | | | | | | | | |
| 20.01.2025 | | | | | | | | | | | | | | | | | | | | | | | | | |
| 21.01.2025 | | | | | | | | | | | | | | | | | | | | | | | | | |
| 22.01.2025 | | | | | | | | | 34.8 | 37.1 | | | | | | | | | | | | | | | |
| 23.01.2025 | | | | | | 43.3 | 39.5 | | 40.2 | 49.1 | | | | | | | | | | | | | | | |
| 24.01.2025 | | | | | | | | | | 55.4 | | | | | | | | | | | | | | | |
| 25.01.2025 | | | | | | | | | | 41.6 | | | | | | | | | | | | | | | |
| 26.01.2025 | | | | 39.0 | 40.0 | 36.2 | | 36.4 | | | | | | | | | | | | | | | | | |
| 27.01.2025 | | | | | | | | | | | | | | | | | | | | | | | | | |
| 28.01.2025 | | | | | 35.7 | 49.3 | | | 42.5 | 36.3 | | | | | | | | | | | | | | | |
| 29.01.2025 | | | | | 48.9 | 42.3 | | | | | | | | | | | | | | | | | | | |
| 30.01.2025 | | | | | | | | | | | | | | | | | | | | | | | | | |
| 31.01.2025 | | | | | | 41.3 | 40.3 | | 50.2 | | | | | | | | | | | | | | | | |
| Stundenbezogener Monatsmittelwert | | | | 24.1 | 41.5 | 41.0 | 39.8 | 38.5 | 42.3 | 44.3 | 40.5 | 39.5 | | | | | | | | | | | | | |

7.2 $L_{p,A,eq,FI,1h}$ Standort 2 - Keitum/Sylt-Ost, Park & Ride Parkplatz

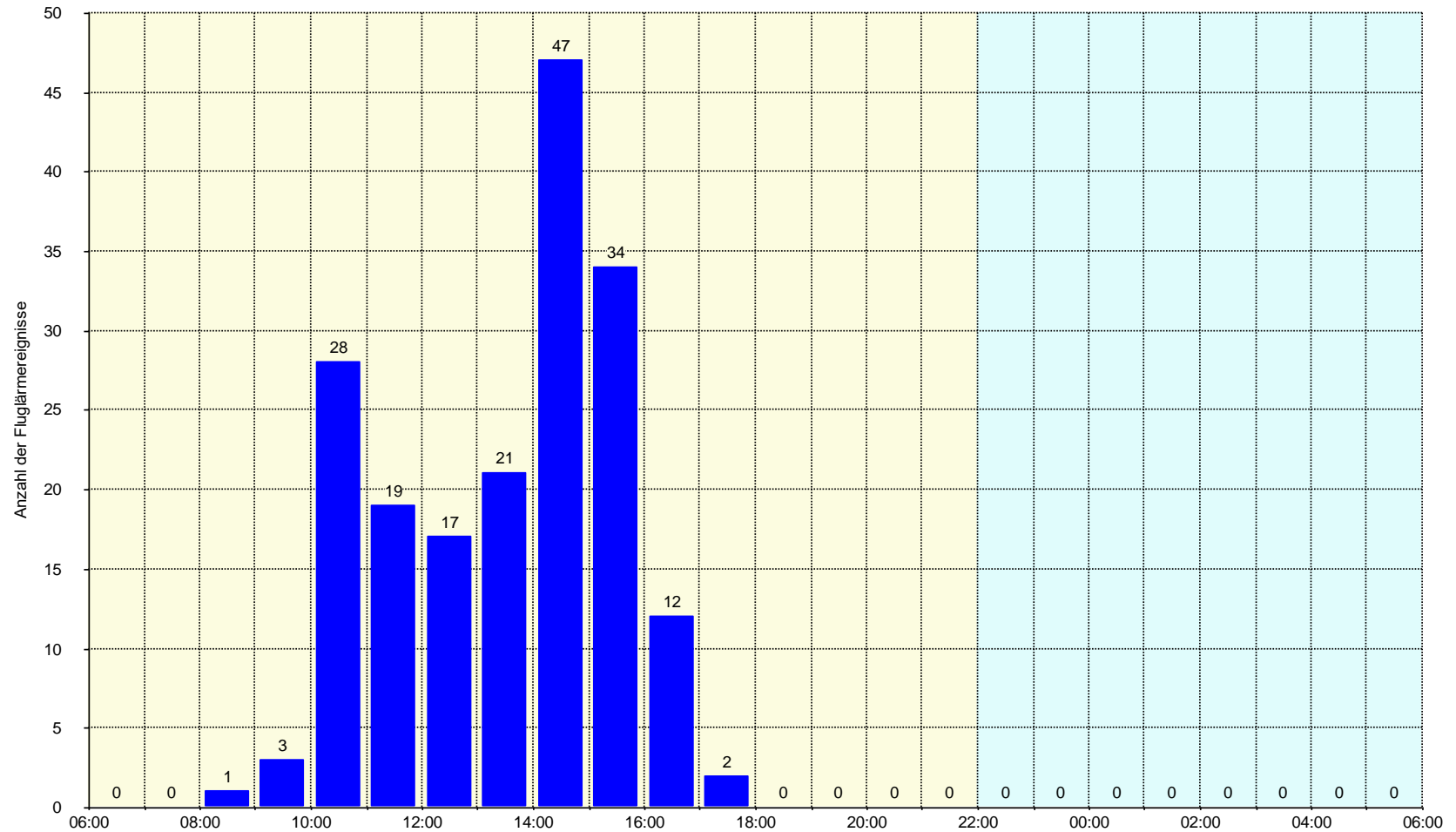
| | Äquivalenter Dauerschalldruckpegel $L_{p,A,eq,FI,1h}$ [dB] | | | | | | | | | | | | | | | | | | | | | | | | |
|-----------------------------------|--|---------------|---------------|---------------|---------------|---------------|---------------|---------------|---------------|---------------|---------------|---------------|---------------|---------------|---------------|---------------|---------------|---------------|---------------|---------------|---------------|---------------|---------------|---------------|--|
| | 06:00 - 06:59 | 07:00 - 07:59 | 08:00 - 08:59 | 09:00 - 09:59 | 10:00 - 10:59 | 11:00 - 11:59 | 12:00 - 12:59 | 13:00 - 13:59 | 14:00 - 14:59 | 15:00 - 15:59 | 16:00 - 16:59 | 17:00 - 17:59 | 18:00 - 18:59 | 19:00 - 19:59 | 20:00 - 20:59 | 21:00 - 21:59 | 22:00 - 22:59 | 23:00 - 23:59 | 00:00 - 00:59 | 01:00 - 01:59 | 02:00 - 02:59 | 03:00 - 03:59 | 04:00 - 04:59 | 05:00 - 05:59 | |
| 01.01.2025 | | | | | | | | | | | | | | | | | | | | | | | | | |
| 02.01.2025 | | | | 56.3 | 55.6 | | 52.4 | 49.1 | 58.9 | | | | | | | | | | | | | | | | |
| 03.01.2025 | | | | | 56.5 | 57.0 | 55.7 | 49.1 | 51.0 | 56.9 | | | | | | | | | | | | | | | |
| 04.01.2025 | | | 45.2 | | 48.5 | 46.8 | 53.5 | | | | 54.6 | | | | | | | | | | | | | | |
| 05.01.2025 | | | | | | | | 51.5 | 46.1 | 54.8 | | | | | | | | | | | | | | | |
| 06.01.2025 | | | | | | 54.7 | 55.3 | | 54.7 | | | 50.6 | | | | | | | | | | | | | |
| 07.01.2025 | | | | | | 58.6 | 50.9 | | | | | | | | | | | | | | | | | | |
| 08.01.2025 | | | | | | | | | | | | | | | | | | | | | | | | | |
| 09.01.2025 | | | | | 52.1 | 49.5 | | | | 46.3 | | | | | | | | | | | | | | | |
| 10.01.2025 | | | | | 39.5 | | | 37.9 | 41.7 | | 52.6 | | | | | | | | | | | | | | |
| 11.01.2025 | | | | | 49.7 | 52.4 | | 48.1 | 52.5 | 48.9 | 45.2 | | | | | | | | | | | | | | |
| 12.01.2025 | | | | | 49.0 | 43.6 | 37.6 | | | 45.5 | 49.3 | | | | | | | | | | | | | | |
| 13.01.2025 | | | | | 52.2 | | 53.9 | 52.6 | | 47.6 | | | | | | | | | | | | | | | |
| 14.01.2025 | | | | | 53.8 | | | | 53.2 | | | | | | | | | | | | | | | | |
| 15.01.2025 | | | | | | | | 46.9 | 49.9 | 49.9 | | | | | | | | | | | | | | | |
| 16.01.2025 | | | | | | | | | | | | | | | | | | | | | | | | | |
| 17.01.2025 | | | | | | | | | 52.5 | | | | | | | | | | | | | | | | |
| 18.01.2025 | | | | | | 51.3 | | 44.4 | 44.9 | 44.2 | | | | | | | | | | | | | | | |
| 19.01.2025 | | | | | 44.0 | 36.9 | 41.7 | | 48.9 | 45.6 | 51.8 | | | | | | | | | | | | | | |
| 20.01.2025 | | | | | | | | | | | | | | | | | | | | | | | | | |
| 21.01.2025 | | | | | | | | | | | | | | | | | | | | | | | | | |
| 22.01.2025 | | | | | 42.4 | | | 39.4 | 51.0 | 45.6 | | | | | | | | | | | | | | | |
| 23.01.2025 | | | | | | 41.3 | 39.8 | 41.6 | | 48.9 | | | | | | | | | | | | | | | |
| 24.01.2025 | | | | | | | | | | | | 58.5 | | | | | | | | | | | | | |
| 25.01.2025 | | | | | 52.8 | | | | | 43.9 | | | | | | | | | | | | | | | |
| 26.01.2025 | | | | 38.3 | 46.3 | 41.3 | | 38.7 | | | | | | | | | | | | | | | | | |
| 27.01.2025 | | | | | | | | | | | | | | | | | | | | | | | | | |
| 28.01.2025 | | | | | | 48.4 | 55.9 | | 48.4 | 39.1 | | | | | | | | | | | | | | | |
| 29.01.2025 | | | | | | | | 52.3 | 52.1 | 53.2 | | | | | | | | | | | | | | | |
| 30.01.2025 | | | | | | | 51.8 | | | | | | | | | | | | | | | | | | |
| 31.01.2025 | | | | | 53.9 | 55.7 | | 51.3 | 44.6 | 48.9 | | | | | | | | | | | | | | | |
| Stundenbezogener Monatsmittelwert | | | 30.3 | 41.4 | 48.4 | 49.0 | 48.2 | 45.0 | 48.9 | 46.2 | 45.3 | 44.3 | | | | | | | | | | | | | |

8 Anzahl der Fluggeräuscheignisse im Monat Januar pro Tagesstunde

8.1 Anzahl der Fluggeräuscheignisse Standort 1 - Wenningstedt, Dünenstraße 17



8.2 Anzahl der Fluggeräuschereignisse Standort 2 - Keitum/Sylt-Ost, Park & Ride Parkplatz



9 Meteorologische Angaben am Standort 1 – Wenningstedt, Dünenstraße 17

| Datum | Windgeschwindigkeit [ms ⁻¹] | | | Windrichtung mittel [°] | Lufttemperatur mittel [°C] | Luftfeuchtigkeit mittel [%] | Luftdruck mittel [hPa] | Regen [Ja/Nein] |
|------------|---|------|--------|----------------------------|-------------------------------|--------------------------------|---------------------------|--------------------|
| | min. | max. | mittel | | | | | |
| 01.01.2025 | 0.3 | 19.0 | 12.8 | 241 | 7,8 | 88 | 973.8 | Ja |
| 02.01.2025 | 0.4 | 12.4 | 8.5 | 309 | 3.6 | 77 | 1003.2 | Ja |
| 03.01.2025 | 0.4 | 15.0 | 9.6 | 294 | 2.3 | 76 | 1006.0 | Ja |
| 04.01.2025 | 0.3 | 5.8 | 3.9 | 174 | 1.9 | 87 | 1007.5 | Ja |
| 05.01.2025 | 0.2 | 10.8 | 7.1 | 128 | 0.9 | 94 | 996.5 | Ja |
| 06.01.2025 | 0.3 | 15.9 | 10.5 | 194 | 6.6 | 91 | 975.5 | Ja |
| 07.01.2025 | 0.3 | 19.4 | 12.9 | 249 | 5.3 | 79 | 984.0 | Ja |
| 08.01.2025 | 0.2 | 15.2 | 10.2 | 261 | 4.9 | 80 | 990.5 | Nein |
| 09.01.2025 | 0.3 | 5.0 | 3.4 | 268 | 2.9 | 86 | 996.3 | Ja |
| 10.01.2025 | 0.4 | 6.5 | 4.5 | 74 | 2.0 | 85 | 1008.6 | Nein |
| 11.01.2025 | 0.4 | 10.1 | 6.6 | 7 | 1.8 | 74 | 1021.0 | Nein |
| 12.01.2025 | 0.2 | 5.2 | 3.4 | 28 | 0.5 | 83 | 1033.6 | Nein |
| 13.01.2025 | 0,3 | 9.4 | 6.4 | 217 | 2.7 | 88 | 1034.4 | Nein |
| 14.01.2025 | 0.4 | 11.9 | 7.6 | 267 | 6.7 | 93 | 1024.7 | Nein |
| 15.01.2025 | 0.2 | 9.2 | 4.6 | 290 | 6.9 | 95 | 1029.0 | Nein |
| 16.01.2025 | 0.8 | 11.0 | 5.3 | 204 | 5.4 | 100 | 1035.0 | Nein |
| 17.01.2025 | 0.2 | 11.0 | 5.5 | 212 | 4.5 | 100 | 1036.0 | Nein |
| 18.01.2025 | 0.1 | 7.7 | 2.7 | 154 | 1.5 | 100 | 1032.0 | Ja |
| 19.01.2025 | 0.1 | 8.4 | 2.9 | 104 | 1.1 | 99 | 1023.0 | Nein |
| 20.01.2025 | 0.4 | 3.7 | 2.5 | 187 | 2.3 | 93 | 1014.2 | Nein |
| 21.01.2025 | 0.7 | 13.0 | 5.7 | 167 | 3.5 | 100 | 1014.0 | Ja |
| 22.01.2025 | 0.4 | 9.9 | 4.0 | 115 | 1.5 | 99 | 1003.0 | Ja |
| 23.01.2025 | 0.8 | 16.0 | 6.9 | 206 | 5.2 | 98 | 999.0 | Ja |
| 24.01.2025 | 1.6 | 19.0 | 7.7 | 164 | 5.9 | 98 | 997.7 | Ja |
| 25.01.2025 | 0.5 | 14.0 | 4.5 | 189 | 5.1 | 97 | 1004.0 | Ja |
| 26.01.2025 | 0.2 | 15.0 | 4.4 | 136 | 3.1 | 99 | 1002.0 | Ja |
| 27.01.2025 | 1.3 | 17.0 | 6.4 | 143 | 6.3 | 96 | 989.1 | Ja |
| 28.01.2025 | 1.0 | 13.0 | 4.8 | 124 | 6.2 | 95 | 993.2 | Ja |
| 29.01.2025 | 0.4 | 12.0 | 5.4 | 180 | 5.5 | 100 | 1000.0 | Ja |
| 30.01.2025 | 1.8 | 15.0 | 6.2 | 262 | 5.2 | 96 | 1014.0 | Ja |
| 31.01.2025 | 0.6 | 14.0 | 6.2 | 271 | 5.3 | 93 | 1026.0 | Nein |

10 Äquivalente Dauerschallpegel im Vergleich zu Vormonaten

10.1 $L_{p,A,eq,T}$ und $L_{p,A,eq,FI,T}$ im Monatsvergleich Standort 1 - Wenningstedt, Dünenstraße 17

| | Monatsmittelwerte Dauerschallpegel Gesamtgeräusch | | | Monatsmittelwerte Dauerschallpegel Fluggeräusch | | |
|----------------|--|---|---|--|--|--|
| | $L_{p,A,eq,(24h)}$ 06:00-05:59 [dB] | $L_{p,A,eq,Tag}$ 06:00-21:59 [dB] | $L_{p,A,eq,Nacht}$ 22:00-05:59 [dB] | $L_{p,A,eq,FI,(24h)}$ 06:00-05:59 [dB] | $L_{p,A,eq,FI,Tag}$ 06:00-21:59 [dB] | $L_{p,A,eq,FI,Nacht}$ 22:00-05:59 [dB] |
| Januar 2025 | 57.6 | 57.8 | 56.4 | 36.6 | 38.3 | |
| Februar 2025 | | | | | | |
| März 2025 | | | | | | |
| April 2025 | | | | | | |
| Mai 2025 | | | | | | |
| Juni 2025 | | | | | | |
| Juli 2025 | | | | | | |
| August 2025 | | | | | | |
| September 2025 | | | | | | |
| Oktober 2025 | | | | | | |
| November 2025 | | | | | | |
| Dezember 2025 | | | | | | |

10.2 $L_{p,A,eq,T}$ und $L_{p,A,eq,FI,T}$ im Monatsvergleich Standort 2 - Keitum/Sylt-Ost, Park & Ride Parkplatz

| | Monatsmittelwerte Dauerschallpegel Gesamtgeräusch | | | Monatsmittelwerte Dauerschallpegel Fluggeräusch | | |
|----------------|--|---|---|--|--|--|
| | $L_{p,A,eq,(24h)}$ 06:00-05:59 [dB] | $L_{p,A,eq,Tag}$ 06:00-21:59 [dB] | $L_{p,A,eq,Nacht}$ 22:00-05:59 [dB] | $L_{p,A,eq,FI,(24h)}$ 06:00-05:59 [dB] | $L_{p,A,eq,FI,Tag}$ 06:00-21:59 [dB] | $L_{p,A,eq,FI,Nacht}$ 22:00-05:59 [dB] |
| Januar 2025 | 70.3 | 70.6 | 69.8 | 42.7 | 44.4 | |
| Februar 2025 | | | | | | |
| März 2025 | | | | | | |
| April 2025 | | | | | | |
| Mai 2025 | | | | | | |
| Juni 2025 | | | | | | |
| Juli 2025 | | | | | | |
| August 2025 | | | | | | |
| September 2025 | | | | | | |
| Oktober 2025 | | | | | | |
| November 2025 | | | | | | |
| Dezember 2025 | | | | | | |